

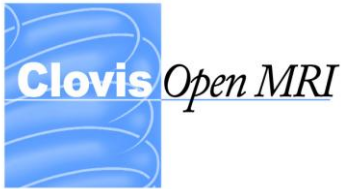
An exclusive service for members of the Clovis/Curry County Chamber of Commerce

Week at a Glance (September 14– September 20)

September 16	Leadership Clovis (First Session) 2 positions still open, deadline Tuesday 12 noon	Business Enterprise Center
September 18-19	State Special Olympics Equestrian Games	Curry County Events Center
September 19	Clovis Board of Realtors Golf Scramble Benefit Casa Esperanza	Clovis Municipal Golf Course

Looking Ahead

September 21-24	NM Emergency Management Assoc. Conference	Clovis Civic Center
September 22-23	Fall Horse Sale	Clovis Livestock Auction
September 22	Chamber Executive Committee Meeting (Note Date Change)	Business Enterprise Center 12 p.m.
September 23	Chamber Board of Directors Meeting (Note Date Change)	Business Enterprise Center 11:30 a.m.
September 25	Sophisticuts Hair Salon Ribbon Cutting	1616 N. Main 1 p.m.
September 26	Yesterday - A Tribute to The Beatles CCC Cultural Arts Series	Marshall Auditorium 7 p.m.



Dear Providers

We are pleased to announce that **Clovis Open MRI** will be contracted with **Presbyterian Health**.

This will enable our facility to offer the extremely high quality of care to the physicians and patients that participate in the Presbyterian Health Network. For years **Clovis Open MRI** has provided exceptional service and unique technology to this community.

We have combined our attention to service with Open MRI technology that is unique to the area.

Clovis Open MRI has the ability to acquire exceptional image quality and provide advanced clinical applications while still offering the most comfortable patient environment available.

- Referring doctors can receive high- field image quality such as MRI DIFFUSION of the brain to detect ischemia.
- THIN SLICE THICKNESS for differentiating diagnosis in neurological and orthopedic cases.
- Open environment for claustrophobic or large patients weighing up to 500 pounds.
- Quick Scan times which increase patient comfort and reduce motion artifact to create higher quality images.
- Advanced clinical capabilities consistent with the 1.5t MRI

We look forward to caring for you and your patients.

Clovis Open MRI

821 Lexington · Clovis, NM 88101

Phone: 575-763-6144 · Fax 575-763-6147
